



MANOS DEL URUGUAY

Errata for *2016L Mirto*

Applies only to patterns dated before 3/2/16

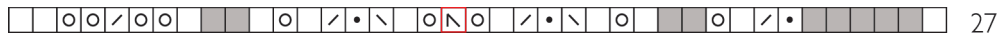
On page 3, in "Final Chart" there is a change.

Additionally, on page 4, there are a variety of small changes.

Please contact us for a new copy.

Applies only to patterns dated before 2/18/16

Lace Border Chart - correction in Row 27



Please email info@fairmountfibers.com with proof of purchase and we can email you an entirely new copy if you'd like.